

Bethel University

Spark

Among Friends Library Newsletter

Library and Archives

Spring 2004

Among Friends Spring 2004 Vol 4 No 2

Friends of the Bethel University Library

Follow this and additional works at: <https://spark.bethel.edu/library-newsletter>



Part of the [Library and Information Science Commons](#)

Recommended Citation

Friends of the Bethel University Library, "Among Friends Spring 2004 Vol 4 No 2" (2004). *Among Friends Library Newsletter*. 37.

<https://spark.bethel.edu/library-newsletter/37>

This Book is brought to you for free and open access by the Library and Archives at Spark. It has been accepted for inclusion in Among Friends Library Newsletter by an authorized administrator of Spark.

Friends Use “Extra” Time to Great Advantage

by Elizabeth Healy

What good use did you make of the extra day in February? Leap Day fell on a Sunday this year, so most of you don't have the excuse that you had to work. Almost 100 people seized the opportunity to become one day smarter on an important topic, as the Friends of the Library hosted a forum on the topic “Stem Cell Research & Human Cloning: Raising the Questions—Scientific Research, Ethical Considerations, Policy Implications.”



Serving as presenters were: Dr. Don Postema (Professor of Philosophy, Bethel College), Dr. Stacey Hunter Hecht (Assistant Professor of Political Science, Bethel College), and Dr. William S.

Oetting (Assistant Professor, Department of Medicine, Institute of Human Genetics, University of Minnesota).

We learned about blastocysts, cloning, public opinion, ethics, medical advances, research funding, and lots of other things I can't spell. (I'm a lot smarter than I was about this issue, but I started pretty far down.) It was an enlightening evening. Once again the Friends of the Library were instrumental in providing an opportunity for members to become informed about a very complex issue. All those in attendance were given facts and opinions to help us form our own beliefs. That's what libraries are all about, isn't it?

By the way, if you did not get to attend, check out the Friends page on the Library Web site (library.bethel.edu) for a bibliography and PowerPoint presentation from the evening. (Though if you didn't have time when you had a whole extra day, how will you find time now?)

Reader Alert:
Hard to
pronounce
items ahead

Friends of the Bethel College Library is an alliance of people dedicated to improving the resources of the library. *Among Friends* is published twice a year.

Board Members

President: Diana Magnuson

Vice President: Jerry Healy

Secretary: Donna Barnett

Treasurer: Lorraine Eitel

Elizabeth Healy

Rosalie Huston

Jocelyn Jensen

Bill Johnson

Carole Cragg

Carol Hansen

Connie Larson

Verena Larson

Earleen Warner

Editor: Elizabeth Healy

Layout: Matthew Malette

Photos: Matthew Malette

For more information contact Earleen Warner at 651-635-8750 or **e-warner@bethel.edu** or visit the BCL's Web site at **<http://library.bethel.edu>**

Bethel College Library
3900 Bethel Drive
Saint Paul, MN 55112

Dear Friends,

I am earnest and sincere in reporting to you that it continues to be my privilege to serve as your president. I have such an easy job! Those of you committing your financial resources, time, energy and creative expertise to the ongoing work of the Friends are a great source of encouragement to me personally and to student patrons of the library. As you can see from this photo, Austin and

Allison are already budding Friends of the Library! They enjoy taking all of the books off the shelf, looking through them, and occasionally tasting them! In honor of their first birthday on February 28th, we donated funds for a bookplate in their honor for each child. May this be another gift idea for those of you with hard-to-buy-for relatives!

We are beginning to plan (yes, already!) for our annual fall Homecoming event and we need your help. Please contact Earleen Warner at the Library for details on how you can participate in this important work. For those of you who have never volunteered, this is a great opportunity to meet with other book fiends (err--friends!), collaborate on our biggest event, and sample seasonal culinary delights.

Thank you again for your faithfulness,

--Diana Magnuson



Austin and Allison Magnuson

Bethel Buys Codex Vaticanus

\ vat-ih-KAY-nuhs \
by Earleen Warner

Recently, the Friends of the Library were presented with a most unique opportunity—to become partners in bringing an amazing facsimile of a 4th-century codex manuscript of the Greek Bible to Bethel College. Together with the Department of Biblical and Theological Studies and the Office of Development, the Friends are assisting in the purchase (donations are still being sought!).



According to Prof. Mike Holmes, “the manuscript is arguably the most influential surviving Greek biblical manuscript...”

In describing the quality of the facsimile, Prof. Holmes said, “When this kind of artistic achievement is combined with a manuscript of the historical and contemporary significance of Codex Vaticanus, the result is a rare combination of theology, history, and art.”

To celebrate this significant acquisition, an “uncrating” ceremony was held in the Bethel College Library on March 31. President Brushaber spoke about the significance of the Bible to Christians and to a Christian academic institution. Then Prof. Holmes “uncrated” the Bible before a spellbound audience. Following the formal proceedings, Prof. Holmes highlighted some of the more significant features of the manuscript, and guests were invited to don white gloves and carefully page through this new treasure. (Oh yes, refreshments were served.)

Once a secure case is purchased and use policies are developed, the Bible will become available for researchers to study.

Metanoia Sculpture Dedicated

\ med•ə'nōi (y)ə \
by Earleen Warner

Bethel College Library is now the host to a most fascinating sculpture. “Metanoia” was created by art professor, Bilhenry Walker (in collaboration with Bethel students: Anna Beich, Michelle Edmonds, Emily Holm, Nathan Johnson, and Joel Lindquist). Its name is the Greek word used in the New Testament for “repentance” or “turning”.

Prof. Walker and his students salvaged a



Friends Inspire Warm Feelings by Carole Cragg

You just won't believe how that fireplace you all gave has warmed up the entire campus! On a cold March evening, almost 30 women and men (yes, I said "men"!) cozied up to the fireplace for an evening of knitting and crocheting, teaching each other the craft, sharing stories, and a warm cup of tea. It was all part of the celebration of Women's History Month. In addition to all the students who participated, Jenell Williams Paris, Anthropology; Stacey Hunter Hecht, Political Science; Barb Martin, Student Life; Debbie Espeland, Alumni & Parent Relations; and Carole Cragg, Library, helped arrange the evening. Chuck Erickson, Campus Store, also brought several of his amazing knitted items including a dress for his granddaughter.

Your gift just keeps on warming hearts and hands. Thank you so much!

wood sculpture by Charlie Girsch. He had turned an old tree into a "whimsical sculpture", but the years were not kind to it and it needed to be dismantled. Prof. Walker had a vision for salvaging parts of it and creating a new art work. He collaborated with a selected team of students, and "Metanoia" was born.

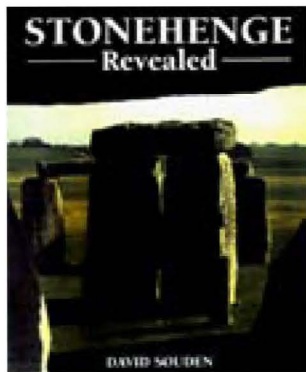
"The obelisk form traces back through public sculpture and monuments ... and Baroque Christian art ... to ancient Egypt. It signifies the concept of eternal life and thus bears an important spiritual meaning for Christians."

The sculpture was dedicated by the Department of Art on April 6 in the Bethel College Library. Both Charlie Girsch and Prof. Walker spoke of the sculpture's history and many meanings. The audience was then treated to a view of the sculpture with its internal purple-blue neon light turned up and the Library lights off, as well as to wonderful refreshments.



Honored by Books by Rhonda Gilbraith

The Library's copy of the book *Stonehenge Revealed* carries this inscription on its nameplate: "The celebrated cross-country dash by John V. Lawyer and his Mom to 'do' Stonehenge as a day-trip from Canterbury, February 1992." And thereby

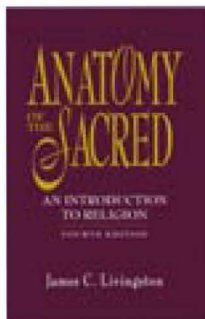


hangs a tale. I'll bet John would oblige your curiosity, if you asked. That's just one of the many intriguing Friends of the Bethel College Library bookplate inscriptions.

Here's another provided by our friend and former colleague, Jim Sheldon, that appears in several music books: *Joanne Flage's Garden Gate*. Hmmmmm. Ask Jim about that the next time you see him.

Our Friends choose the bookplate message for the books their donations help us buy. Sometimes they have just the book in mind for their bookplate and its inscription. But if not, mine is the pleasurable task of finding one that matches the subject they've chosen. Having graduated from Bethel myself and now working here, I often know the people honored by some of our Friends, so I can choose a book that in

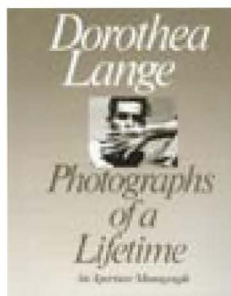
some way reflects that person. That's very satisfying! Many Friends of the library celebrate loved ones on a bookplate—parents, husbands, wives, children, friends, colleagues, professors or mentors—even a whole Bethel department.



One of the things libraries do so well is to preserve the history of a community. Our

books reflect the community we exist to serve—its curriculum, intellectual endeavors, its interests and passions. The Friends' contributions help us improve our collection in many ways; they also add another layer of history. When we pick up *Fra Angelico: The San Marco Frescoes*, we find remembered there on a bookplate Nancy Steinbach Ward; *Anatomy of the Sacred* honors Webster Muck; *The Birth of the Cell* remembers C. Weldon Jones and *Dorothea Lange:*

Photographs of a Lifetime honors Connie Larson.

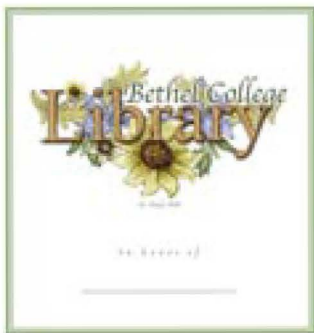


Of course each bookplate, whatever it reads, commemorates the gracious donation of a valued Friend of

our Library. Thank you all, once again, for your generous support!

Dedicated in Honor of Me

Now that you have read Rhonda's article, you are probably anxious to honor someone with a beautiful bookplate. If you don't have anyone in mind, you could honor the editor of one of your favorite newsletters. Perhaps you dream of having your name inscribed on a Friends of the Library bookplate, but are embarrassed to blow your own horn. Well, the answer is simple. Just get some of your dearest friends to become friends of ours. You treat them very nicely for a time and then tell them about all of the benefits of being members of the Friends of the Bethel College Library. Do this enough times and eventually one of them will recognize your great contributions to life and honor you with a bookplate. And the Friends will grow and prosper, as well.

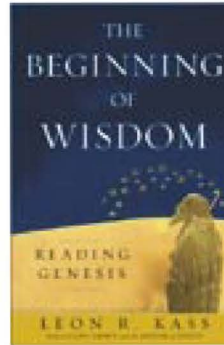


Book Review

At our last Board meeting we welcomed our newest member, Bill Johnson. Bill is a Professor of Political Science. Imagine Bill's surprise upon finding out that just by

joining our august group he became eligible to be published in our elite publication!

We welcome Bill and are pleased to present his book review.



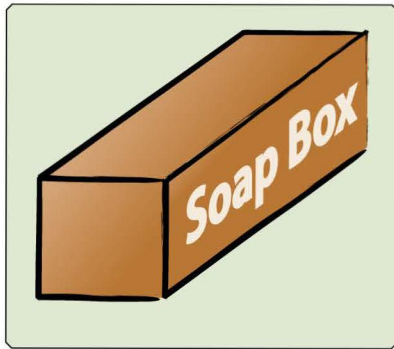
Leon Kass, *The Beginning of Wisdom: Reading Genesis*. New York: Free Press, 2003.

Most of us were taught to read the book of Genesis historically, as the sequence of events from the creation to the death of Joseph. Kass offers another perspective: it supplies the essential wisdom that all of us need to live rightly in this world. Its primary purpose, thus, is pedagogical. This is a long (700 pages) and challenging work, full of new insights for an evangelical reader.

Genesis tells us who God is (and is not), who we as humans are, and how we do and should relate to Him. Kass also finds basic lessons on relations between wives and husbands, parents and children, and humanity and nature, as well as the conduct of people who are called of God amid a society of those who are not. We learn why humans so often go wrong.

Kass is best known as a bioethicist who cautions us against genetic experimentation. On the faculty of the University of Chicago, he has taught a seminar on Genesis, having

mastered Biblical Hebrew. Born to a Jewish family but not reared in the faith, he has come to grasp the importance of the Bible to his concerns for life. For him, Genesis is true, not just as the Word of God, but because it accurately reflects the human condition in all its breadth.



Your Turn

Do you have a book that you just couldn't put down? Would you like to tell others about it? Maybe you read something that was a waste of time and you want to save others from the same mistake. Here is your chance. Send your book reviews to Earleen Warner at the Bethel College Library. Please keep them to no more than 250 pages. Any reviews deemed to be of special interest to our readers will be published in our next issue of *Among Friends*. All contributors will receive a free copy of the newsletter.

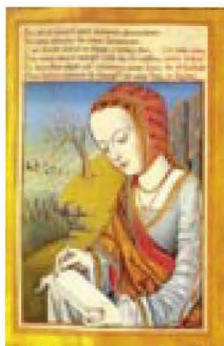
Incredible Offer – Call Before Midnight Tomorrow!

The Board of the Friends of the Bethel College Library is an incredibly hard working and creative group. We want the very best for our members. It is not enough that through the generosity of the Friends we have been able to purchase numerous new materials for the Library. It is not enough that we are able to provide provocative seminars on timely topics. It is not enough that we have greatly improved the ambiance of the library. It is not enough that we have had a part in bringing works of scholarship and art to our campus. (However, it should be enough that we feed you at all of these events.)

No, in spite of all that the Friends group does for its members, the Board is constantly looking for other ways to improve your experience with us. Sad to say, our Board members have been too heavily influenced by the media. One wanted to offer more free minutes. When questioned, "Minutes of what?" she had no answer. Another thought that an extended warranty would do the trick. However, with no real product it was difficult to figure out exactly what the warranty would cover. A third member encouraged us to "super-size" the membership. She apparently wasn't up on the latest news in that area.

Fortunately, our Board has some members

that are more thoughtful and less influenced by our consumer culture. Some of us



realize the superior value of the printed page in both informing and entertaining our valued members. Some of us appreciate the fact that our members have chosen to become Friends of the Library rather than

Pals of Television or Chums of Radio or Buddies of Video Games.

With that in mind, we have come up with several ideas. We would be interested in facilitating the formation of reading clubs and/or writing groups among our members. If you would be interested, please contact Earleen Warner and have your name added to a list of interested (and, we hope, interesting) people. The Friends group would coordinate an initial meeting to discuss format, meeting times, location and treats. If the last item can be solved to everyone's satisfaction, this has a good chance of working.

Earlier in this article it was mentioned that the Board has come up with several ideas. Okay, so it was one idea. We wouldn't have space



to provide you with details on any more ideas anyway. However, suggestions from our readers are always welcome.



Update on Connie Larson by Verena Larson

In the Autumn newsletter you read that Reference Librarian, Connie Larson, was seriously ill and in the hospital. Since then, Connie has made great progress in her restoration to health and was even able to attend the recent Friends Forum. With Connie's amazing determination, her family's strong support, good physical therapy, and the prayers of many, she has regained the ability to talk, read, and walk with some help. On occasion the library staff has relied on her good memory to help locate needed information. We are hopeful that she can return to work this fall. Thank you for your continued prayers for Connie.

Footnotes

- * The Friends of the Library board has a new member! Welcome, Bill Johnson, Professor of Political Science!
- * The Library recently welcomed Nancy Olson to its staff as the new Circulation Co-Supervisor, replacing Vivien Steinbach, who retired last year.
- * Bethel College and Seminary will become Bethel University this year. The Library will become known as the Bethel University Library. Your membership in the Friends will be upgraded to Friends of the Bethel University Library at no charge!
- * The 2004 Bethel Homecoming theme is “A Brand New U.” If you have read page 2, then you have already contacted Earleen Warner with how you can help. Those of you who read the ending first (to see how it comes out), we would love your help, too!

Past



LRC 1973

Present



BCL 2004

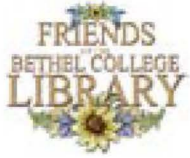


Can we not dream?

Future



Bethel University Library
(Inspired by: Powell Library, UCLA)



**3900 Bethel Drive
Saint Paul, MN 55112**

Address Correction Requested