

Bethel University

Spark

Among Friends Library Newsletter

Library and Archives

Fall 2010

Among Friends Fall 2010 Vol 11 No 1

Friends of the Bethel University Library

Follow this and additional works at: <https://spark.bethel.edu/library-newsletter>



Part of the [Library and Information Science Commons](#)

Recommended Citation

Friends of the Bethel University Library, "Among Friends Fall 2010 Vol 11 No 1" (2010). *Among Friends Library Newsletter*. 24.

<https://spark.bethel.edu/library-newsletter/24>

This Book is brought to you for free and open access by the Library and Archives at Spark. It has been accepted for inclusion in Among Friends Library Newsletter by an authorized administrator of Spark.

DIGITAL LIBRARY HELPS US DISCOVER WHAT MAKES BETHEL BETHEL

by Kent Gerber
Digital Library Manager

Autumn is a good time for reflection. The changing color of the leaves and the lowering temperature is an environment rich with opportunity to appreciate the beauty of the moment while considering the lingering impressions of the past summer. Alumni returning for homecoming will be immersed in the convergence of past and present at Bethel while enjoying the time of fellowship with each other and reflecting on their student days. With the rapid pace of change at Bethel in the last few years, time for reflection is needed and the Digital Library is producing a resource to help all to do that.

Clarion Archive Digitized

Past editions of the *Clarion* have been digitized and are being posted to the Digital Library, thanks to Archives collaboration and a

Faculty Alumni Grant. While a database of fully searchable *Clarions* provides alumni the opportunity to search for themselves or their friends, it also provides opportunity for self-examination for Bethel as a community. This is a rich resource of Bethel's history and culture; the headlines, even as far back as the 1920's, show that many things the Bethel community works through have been seen before. The present conditions of economic hardship, controversial issues on campus, and loss of community members all appear throughout the years alongside the bright spots of scholarship, leadership, and service. The Digital Library is useful in continuing to explore what makes us unique as a community, what is best about Bethel, how it has grown, and how to make it even better. There will be an open house in the library during home-

coming on Saturday, October 16, from 10-11:30 AM to show the Digital Library and its collection of *Clarions*.

Historical Photographs Project

The Bethel Digital Library has completed its first collaboration with the Minnesota Digital Library and submitted 150 photographs documenting Bethel's history as early as 1908. This collection will be available through the Minnesota Digital Library's portal, Minnesota Reflections, and directly from the Bethel University Digital Library later this Fall.

These two collections will continue to grow and new ones are in development to preserve and make accessible Bethel's unique scholarly,

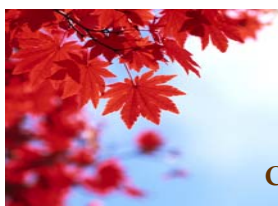


Can you identify the three women on this Homecoming Float from 1959-1960?

historical, and cultural resources. Take a look for yourself using the links below and keep checking future issues of the Friends Newsletter for more from the Bethel University Digital Library.

Bethel University
Digital Library
<http://content.clic.edu/bethel.html>

Minnesota Reflections
<http://reflections.mndigital.org>



Join us for
Homecoming @ BU Library
October 16 from 10—11:30 AM
Celebrate the Digital Library's new collections!

INSIDE THIS ISSUE:

GRACE IN AN UNGRACEFUL WORLD	2
THE CENTER OF CONVERSATION	3
LIBRARY FOOTNOTES	4

GRACE IN AN UNGRACEFUL WORLD



By Eric Gossett
President of the Friends

One of the most difficult tasks we face as humans is fulfilling God's command to forgive others. We are even very likely to be offended when God forgives people whom we consider unworthy of grace. We should be grief-stricken that the church is identified in the minds of many as a group of people who are judgmental, angry, and strongly identified with a single political agenda, for that is not what Christ intends for his followers. I strongly suspect that very few people are shamed into the kingdom of God. But many are loved into the kingdom, and that includes many who are outside the boundary that delimits who I consider deserving of God's grace.

In *What's So Amazing About Grace*, Philip Yancey helps us to recapture the depth of God's grace and how that should be reflected in our character.

In *What's So Amazing About Grace*, Philip Yancey helps us to recapture the depth of God's grace and how that should be reflected in our character. It is written in four parts:

How Sweet the Sound starting with a chapter on *Babette's Feast* (a film well worth watching)

Breaking the Cycle of Ungrace including the chapter "Why Forgive?"

Scent of Scandal containing a chapter entitled "Grace Avoidance"

Grace Notes for a Deaf World including the chapters "Mixed Aroma" and "Serpent Wisdom."

I periodically revisit this

book because its insights are so difficult to internalize.

The Magician's Elephant, by local author Kate DiCamillo, displays grace in an ungracious world through a story for children (and adults who are willing to stray outside the mental prison of "adult-level" reading). Although not overtly a religious book, it illustrates in a captivating manner how God's grace and light can illuminate a dark and sad world.

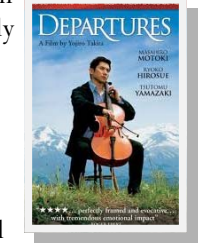


Two DVDs at opposite extremes of the grace spectrum are *The Stoning of Soraya M.* and *Departures*. The first is a disturbing visualization of a real event. The film (Persian with English subtitles) is based on a book by French-Iranian journalist Freidoune Sahebjam. The story centers on Soraya, who refuses to grant her husband a divorce so that he can marry a younger woman. Her husband turns most of her village against her, with tragic results.

On the other end of the spectrum is the film *Departures* (Japanese with English subtitles), about a Japanese man who has been a cellist in an orchestra that has been disbanded. He decides to make a

career change and responds to what he believes is an ad for a job as a travel agent. The actual job is quite different. As he slowly begins to understand the value in his new work, he faces problems at home. The film unpretentiously integrates this conflict with the stories of the struggles faced by his coworkers and some of his own past history. In the end, grace shines through.

You are probably as tired as I am of the negative manner in which the church is often portrayed in the media. *Lars and the Real Girl* is an exception. The movie is about an extremely shy man who purchases a Real Doll and introduces her/it to his brother and sister-in-law as a young woman who is in need of assistance. The writers could easily have taken the story in an unhealthy direction. They did not. Instead, his sister-in-law and eventually the community accept Lars' "girlfriend" and treat her as real. The pastor and church leaders even allow her to attend worship services. The



grace extended to Lars by his family and church community exert a redemptive influence on him.

THE CENTER OF CONVERSATION

By David Stewart
Director of Libraries

A volume of essays I edited a few years ago was published as “A Broadening Conversation.” It’s a title I was very pleased with, as it captured perfectly what we had in mind with the project: to gather the fragments of an intriguing discussion that had been going on across generations, and then to re-convene and broaden this conversation for the contemporary setting.

The community in conversation – extending the hospitality, taking care of the arrangements, making the introductions, providing the right venue at the right time – the capacity to foster all of this is absolutely at the core of what a good library does. And I find it both satisfying and rewarding to work in a library that truly excels at such things.

As I look back to the experience of being interviewed for the position of Director of Libraries at

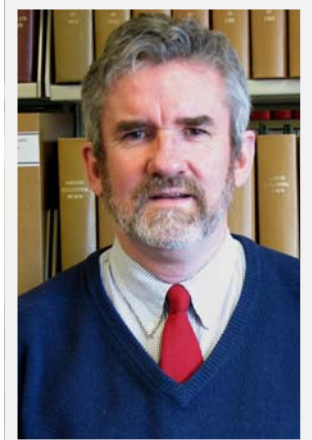
Bethel a year ago, it’s clearer than ever that it was the library’s flair for this that was one of the main attractions.

Libraries can excel, or can leave their mark, in a variety of ways. Some do so with the distinction of their collections, others with brilliant architecture, and so on. The defining characteristic of Bethel University Library is its service and hospitality. Depend on it: this is not an easy thing to excel at, and such things never just happen – gifted and determined people have made this a priority, and followed through with diligence, in specific and effective ways over the years, and we are all the beneficiaries.

Bethel University’s library plays a vital role in cultivating this community’s own “broadening conversation” in different ways: via print, online, and other resources; in individual reference queries, both in and outside of the classroom; in the community presentations that happen all the

time; and so on. What makes this even more remarkable (and such a treasure for me) is that the library pulls it all off within such limited space. The fact that our library has been able to adapt and adjust the use of its spaces to accommodate a conversation that embraces the full spectrum of scholars, topics, and ages is something to be proud of. And to accomplish this in a community that has diversified and grown so dramatically over the decades is an achievement that is hard to describe: “resourceful,” “innovative,” and “heroic” are some of the words that spring to mind for me, as a comparative newcomer. The Friends have been a vital partner in helping us create this atmosphere and opportunities for conversation.

But – here’s a question worth an extended discussion in itself – what kind of library spaces will be needed to foster the *next* installments of Bethel’s conversation?



The fact that our library has been able to adapt and adjust the use of its spaces to accommodate a conversation that embraces the full spectrum of scholars, topics, and ages is something to be proud of.

Primetime
@BUlibrary
10:20— 11:00 am
@ BU Library
Fireside Lounge

Thursday, September 30: Dan Yim - Philosophy
The Moral Significance of Fashion

Tuesday, October 12: Lucie Johnson & John Lawyer
Is There Life After Retirement?

Tuesday, November 2: Ann Holland - Nursing
*Teaching about Race in Cultural Nursing Education:
The Experience of White Teachers*



Friends of the Bethel University Library is an alliance of people dedicated to improving the resources of the Library. Among Friends is published twice a year.

Board Members

President: Eric Gossett
Vice President: Rosalie Huston
Secretary: Diana Magnuson
Treasurer: Earleen Warner

Carole Cragg Jocelyn Jensen
Thomas Johnson James E. Johnson
Lorraine Eitel

Editor: Will Keillor
Layout: Ann Gannon

For more information contact Carole Cragg at 651-638-6065 or c-cragg@bethel.edu

**BETHEL
UNIVERSITY**

Bethel University Library
3900 Bethel Drive
St. Paul, MN 55112

Visit the Bethel University Library's website at:
<http://library.bethel.edu>

Friends Can Give Online!

An online form is available from the Bethel homepage or by going to <http://www.bethel.edu/development/give-to-bethel/online>. Designate "Friends of the BU Library" in the "Other" category

LIBRARY FOOTNOTES

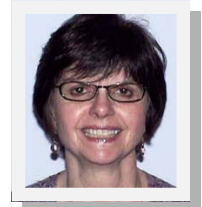
By Earleen Warner



Gene Kenney, Library Technology Specialist, celebrated 15 years of service in the Bethel University Library. Staff and students have appreciated his assistance!

Carole Cragg, Associate Director of the Bethel University Library, was awarded the designation of Bethel's May

Colleague of the Month for her above and beyond work during the transition to a new Director of Libraries.



Hats Off For Jill! A "Hats Off" event was held for Jill Gerriets (Digital Learning/Systems Librarian) this fall to recognize her work in making the new WorldCat Local searching interface available, her contributions to the librarians' use of their new LibGuides research guides tool, and her development of online library instruction tutorials for students taking courses that meet online or off-campus.

Recent Additions to the BU Library Collections. A

selection of titles discussed on the American Public Media radio program formerly known as "Speaking of Faith with Krista Tippett" was purchased for the Library in memory of Connie J. Larson. Some examples:

Houses: A Family Memoir of Grace by Roberta C. Bondi

Sunday Mornings in Plains: Bible Study with Jimmy Carter:

Bringing Peace to a Changing World by Jimmy Carter

The American Soul: Rediscovering the Wisdom of the Founders by Jacob Needleman

But God Remembered: Stories of Women From Creation to the Promised Land by Sandy Eisenberg Sasso

Dangerous Surrender: What Happens When You Say Yes to God by Kay Warren

A full list can be found at: <http://library.bethel.edu/about/friends/>

[ConnieLarsonMemorial](http://library.bethel.edu/about/friends/ConnieLarsonMemorial)



Examples of other titles recently purchased for the Library with Friends of the Library donations:

The Art of Choosing by Sheena Iyengar

This Book is Overdue!: How Librarians and Cybrarians Can Save Us All by Marilyn Johnson

The Double Comfort Safari Club by Alexander McCall Smith
Prairie, Lake, Forest: Minnesota's State Parks by Chris Niskanen & Doug Ohman

Making The Most of Your Money Now: The Classic Bestseller by Jane Bryant Quinn





Your Gifts Do Make a Difference.

Before receiving the 2009-2010 Connie J. Larson Memorial Scholarship from the Friends of the Bethel University Library, I had little to no knowledge of what this organization did, besides providing a generous scholarship to a library student worker every year. After receiving my award, however, I thought, "Who are these people and what do they do besides love the BUL?" What does it mean to be a "friend" of the BUL? Is it similar to "friending" someone on Facebook? After a little bit of research, I realized just how much the Friends do for the BUL. They purchase the travel books, which I have used to research my 2011 trip to Japan. They purchase the audiobooks, which I have used during my 4-1/2 hour drive back home to Wisconsin. Many of the supplemental items for the library have been purchased by this group—which I find to be a lovely concept. It's wonderful to imagine people who care enough about providing educational items for lifelong learning—not just materials for the classroom.

April Walker, Senior, English Lit & Writing

Here's heartfelt "THANKS" to you Friends and a warm welcome to new Friends who will help us to continue to enrich the BU Library experience for students like April and the rest of the Bethel community with resources like:

Annual Connie J. Larson Scholarship for a library student worker

Annual Library Research Prize for College of Arts and Sciences

Primetime@ BU Library presentations by faculty, students, and distinguished alumni

Travel Books, audiobooks, DVDs, and more!

Eric Gossett, President, Friends of the Bethel University Library



FRIENDS OF THE BETHEL UNIVERSITY LIBRARY

Membership for 2010-2011

Renewing Member New Member

Membership Levels / Annual Dues

Student \$10
 Supporting* \$25
 Sustaining* \$50-\$100
 Patron* \$250
 Lifetime** \$1,000

* Sustaining, Patron & Lifetime levels can be joint membership for couples
 ** Lifetime membership may be paid over a period of up to 5 years

Name _____

Street _____ Apt. _____

City _____ State _____ Zip _____
 (_____) _____

Phone _____

Email **(Please include!)** _____

- I would like to receive the *Among Friends* newsletter via email (Please include email address above)
- Please notify me by email so I can read *Among Friends* newsletter on the Library website
- I live in the Bethel area and would like to have University Library privileges
- No, please do not list my name & membership level In Friends materials

Visit the Library website at <http://library.bethel.edu>

Payment Options

- Online at <http://www.bethel.edu/development/give-to-bethel/online>
 (Be sure to type *Friends of BU Library* in the "Other" category)
- Check payable to **Bethel University**
- Mail to: Friends of the Bethel University Library
 3900 Bethel Drive
 St. Paul, MN 55112
- VISA MasterCard

Acct # _____

Expiration Date _____ Amount Charged _____

Name on Card _____

Signature _____

Billing Address Street _____

City _____ State _____ Zip _____

(_____) _____
Telephone

Payroll deduction is available for Bethel Employees

- Check here if you would like us to send a form

Bookplate Options

For each \$25 donation, you may have a bookplate placed in a new book

- "A Gracious Donation of..."
 # _____

Please print your name
- "In Honor of..."
 # _____

Please print name
- "In Memory of..."
 # _____

Please print name

Please use another sheet of paper if more space is needed

Place bookplates in book(s) in the following area(s) of study:

- No Preference
- Arts and Humanities

Specify
- Bible/Theology/Religion

Specify
- Health Sciences

Specify
- Math and Science

Specify
- Social Science

Specify
- Other

Specify