

Bethel University

Spark

Among Friends Library Newsletter

Library and Archives

Fall 11-2019

Among Friends Fall 2019 Vol 20 No 1

Friends of the Bethel University Library

Follow this and additional works at: <https://spark.bethel.edu/library-newsletter>

Recommended Citation

Friends of the Bethel University Library, "Among Friends Fall 2019 Vol 20 No 1" (2019). *Among Friends Library Newsletter*. 3.

<https://spark.bethel.edu/library-newsletter/3>

This Book is brought to you for free and open access by the Library and Archives at Spark. It has been accepted for inclusion in Among Friends Library Newsletter by an authorized administrator of Spark.

AMONG FRIENDS



20 YEARS AS FRIENDS

20 YEARS OF OLD & NEW FRIENDS

WE LOOK FORWARD TO CONTINUED PARTNERSHIPS WITH OLD FRIENDS AND NEW, STRIVING TO KEEP OUR LIBRARY EXCELLENT, VIBRANT, AND RELEVANT IN ORDER TO:

“EMPOWER FUTURE STUDENTS TO BECOME INFORMED STEWARDS, BETTER ABLE TO CONSTRUCT AND REPAIR THE KINGDOM IN EVERY WALK OF LIFE” (FROM THE INAUGURAL FRIENDS MEMBERSHIP APPEAL).

In 1999, a long-term dream of building an organization to support Bethel’s library became a reality. We’re devoting this issue to celebrating 20 years of the Friends of the University Library.

The past 20 years have been a period of intense change and challenge for libraries. The internet was still an exciting novelty in 1999—Google was less than a year old! We were just beginning to navigate the world of electronic books, journals, and databases while scrambling to provide the requisite technology for the new realities of academic research. In the intervening years our challenges have shifted, costs and complexity have multiplied. Through all the changes the Friends have been an invaluable help.

It’s been great fun reviewing the range of activities sponsored by the Friends, the resources funded, the investment of time, creativity, and money. It’s been heartwarming to see the names, photos, comments, and contributions of so many who have helped us along the way, and bittersweet to recognize among those beloved Friends some who have since passed on, such as Connie Larson, Jim Sheldon, Carol Hansen, G. W. Carlson, Stacey Hunter-Hecht, Jerry Healy, Vivien Steinbach, Jim Johnson.

A lot may have changed in 20 years, but the Friends’ values of community, life-long learning, civil discourse, hospitality, and enrichment of mind and spirit have remained constant. But we don’t want to forget about our future as we review our past—we hope that you’ll be part of our continuing story. Please consider renewing or increasing your membership contribution to keep our partnership strong for many years to come.

~ Rhonda Gilbraith

www.bethel.edu/library/friends-university-library/membership-info



IN THE BEGINNING



When the “Friends” began in 1999, the mission was to not only create awareness of library services in our academic community, but to encourage students — “in their immediate scholarly endeavors”— and to provide life-long learning and enrichment opportunities for students and all members of the Bethel Community.

Read on to see just a little of the impact the Friends have made through their first 20 years.



- THE ORIGINAL PLANNING COMMITTEE**
- | | |
|-------------------------|----------------------|
| Stephanie Kidwell Adams | Rosalie Huston |
| Donna Barnett | Connie Larson |
| G. William Carlson | Verena Larson |
| Carole Cragg | Jocelyn Jensen |
| Lorraine Eitel | Diana Magnuson |
| Jodi and Chris Goetzke | Rhonda Gilbraith |
| Carol Hansen | Jim Sheldon |
| Elizabeth Healy | Bob Suderman |
| Jerry Healy | Barry & Tina Westman |



BECOMING A FRIEND

My involvement with “The Friends” began with a friendship. My close friend Connie Larson, a Bethel Library staff person invited me to join a newly formed group supporting the Bethel Library.

Many years previously, Connie and I became friends as student library workers. During the academic year I worked in Periodicals while Connie worked in the next-door Acquisitions office.

We worked side-by-side as full-time library workers for three summers. One hot summer afternoon, while collating a mass mailing project, we discovered Connie’s mother and my father knew one another as youngsters living in Monticello, Minnesota.

Upon graduation, I taught out of state while Connie became one of the Bethel Library staff. When I returned to Minnesota and landed a local full-time teaching position, we reconnected.

Over the years, we often met for meals and commiserated over the similar challenges placed upon public elementary school libraries and collegiate libraries. With this background, Connie thought I could be a “good friend of the library”.

While the exact composition of The Friends has changed over the years, the mission remains

the same: to “enhance the quality of the library collections, facilities, and services by encouraging gifts, awareness of library resources, and participation in library programs.”

The library staff continues to be a highly creative, deeply dedicated, hardworking team constantly thinking of ways to update services and better support learners despite the constraints of budget, space, and staffing.

The staff strives to serve Bethel students, faculty, and staff—it is their job and their ministry. As a Friend of the Bethel Library, I can lend encouragement and support to these servant-minded workers

and I hope that I am the “good friend of the library” that my dear friend Connie first envisioned.

~Rosalie Huston

ROSALIE HUSTON’S RELATIONSHIP WITH THE BETHEL LIBRARY BEGAN AS A LIBRARY STUDENT WORKER. SHE IS ONE OF THE LONGEST SERVING BOARD MEMBERS OF THE FRIENDS.



Staging the 17th Century 2009



The Revolution in Ukraine 2014



Black History Month 2010



From Idea to Picture Book 2012



Constitution Day Podcast 2019

LIFE-LONG LEARNING IN ACTION

Before Primetime at the BU Library began, faculty on campus shared work-in-progress articles, presentations and other pursuits with their colleagues in random classrooms around campus, often with little fanfare or attendance. The spring of 2007 dawned a new era! *Not (necessarily) Ready for Primetime* was born!

The program, started by the Friends of the Library and Bethel's Faculty Development, was a way to give a designated place and time for faculty to share what they were working on and get feedback from peers—hence, the “*Not (necessarily) Ready*” title.

Soon after, Ready for Primetime, Edgren Scholars, Faculty Excellence Award winners and Off-Campus Studies joined the schedule.

Since its beginning, there have been over 300 presentations given, many of which have been recorded and can be found on the [BethelUDigLib channel on YouTube](#).

Primetime is a shining example of life-long learning in action. Whether it be a faculty scholar preparing for a presentation or a student reflecting on their off-campus study experience, the entire Bethel community and more are able to share in the learning.

We invite you to join us! You can find event dates and times on the Library website: www.bethel.edu/library/news-events.

~Ann Gannon

Highlights Of Our First 20 Years



Friends receive ALA Honorable Mention Award for public relations materials



Beyond the War of Words: War in Iraq forum features G.W. Carlson, John Lawyer and Sandie McNeel.

Name changes to Friends of the Bethel "University" Library

having plenty of his own breath to do amazing things. The captivating Charlotte DeVries, the lovely LuAnn Aldrich and the superb Susan Lohmann sang with passion Dan Schwartz, special guest artist, displayed his award winning finger-style guitar picking.



One of the highlights of the evening for many in attendance came during Will Healy's monologue. He talked about growing up in the neighborhood of the old Bethel campus. Of course, no mention of that community

The Friends hold largest fundraiser: An Evening of Music and Humor hosted by Will Healy and featuring the Over and Back Band.

Bridging the Through Children Literature forum Greenlee, Susan Magnuson and Job



Friends co-sponsor Primetime as a new way of encouraging life-long learning.



Fireside Lounge created thanks to donation from the Friends.

2000

2002

2005

2007

1999

2001

2004

2006

2008

Class of '99 makes generous donation of nearly \$5,000

Nancy Lundquist donates art book collection which is celebrated at an Art in April event.

Stem Cell Research & Human Cloning forum features Don Postema, Stacey Hunter-Hecht and William Oetting

John Lawyer donates Great Courses collection.

The firm Larson S for Libr Workers



Christian Response to Global Warming forum features Thomas Becknell, William Johnson, Ken Peterson and Sara Shady



Generations
and Young Adult
 forum features Adele
 Brooks, Diana
 Gossett
 and Eric Gossett
 and Attorney.



The first Library Research Prize is awarded.



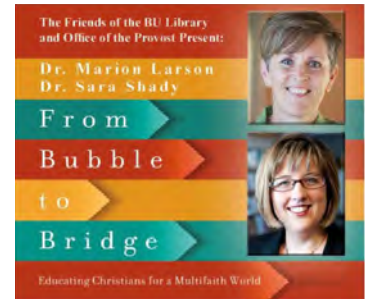
Friends raise over \$3,000 to replace Fireside Lounge furniture.



Crash Course: the 1929 Depression and the 2009 Recession forum features Thomas Becknell, Chuck Hannema, and columnist Ed Lotterman.



G.W. Carlson, Chris Gehrz & Christian Collins Winn
 co-authors of "The Pietist Impulse in Christianity" will discuss how Pietism has shaped the distinctive identity, mission and values of Bethel University.



Homecoming event features Marion Larson and Sara Shady as they discuss their book, *From Bubble to Bridge: Education Christians for a Multifaith World*.

2009

2011

2016

2008

Connie
 Scholarship
 Student
 is awarded.



A collection is taken in memory of Terry Coffee, Director of Multicultural Development, to provide books on Urban Youth Studies and Reconciliation



2010

Calling Card to Calling Plan: Social Networking Then and Now forum features Diana Magnuson, Nathan Gossett, and Peggy Kendall



2013

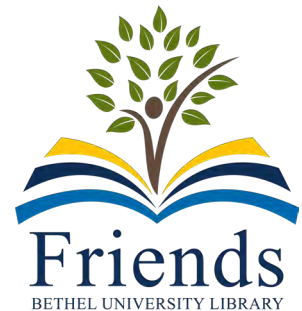


2017

Primetime turns 10!



New Logo launched.



INVESTING IN THE FUTURE



Erica Myers Ross
2008-2009



April Walker
Youngblood
2009-2010



Jimmy Pate
2010-2011



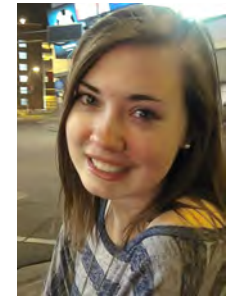
Catie Creelman
Levenick
2011-2012



Rachael
LaCroix Kuntz
2012-2013



Joseph
Drechsel
2013-2014



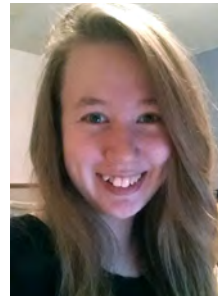
Taylor Delzer
2014-2015



Hannah
Eshenaur
2015-2016



Erin Koski
2016-2017



Ruth
Nordquist
2017-2018



Lindsey Long
2018-2019



Jake Van Loh
2019-2020

Connie J. Larson Memorial Scholarship

This scholarship was established in 2008 in memory of Reference Librarian Connie J. Larson, and her passion for the development of student library assistants. Candidates are nominated by their supervisor and exemplify exceptional library service and quality grades. Past winners have gone on to successful careers in science, technology, finance, teaching...and librarianship!

\$3,600 Awarded

The Library Prize for Research

In 2009, the Library Research Prize was established to encourage excellence in student research that makes substantial use of library resources and services, demonstrates understanding of information literacy competencies and promotes undergraduate research throughout the curriculum. Winners have gone on to careers in teaching, politics, finance, advocacy and graduate and post-graduate studies.

\$3,400 Awarded



Taylor Ferda
2009-2010



Nathan
Cornelius
2010-2011



Ryan Steel
2011-2012



Matisse Murray
2012-2013



Danielle
Becker
2013-2014



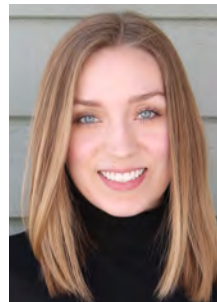
Fletcher
Warren
2014-2015



Emma
Beecken
2015-2016



Christopher
Bengtson
2016-2017



Berit
Turnquist
2017-2018



Sarah Bylsma
2018-2019

Coming In 2020

The Library Research Prize has undergone a redesign and will focus on first year students in required classes where Research Librarians also teach information literacy skills. The first

(\$300), second (\$200) and third (\$100) place prizes will be awarded annually, beginning in the fall of 2020.

Student research projects will be nominated by their instructors and

judged by University Research Librarians based on the student's use of library resources as well as their ability to select, evaluate, use, and cite the resources in their project.

A TASTE OF OUR HOSPITALITY



Connie Larson's Swedish Cream

(from her sister Kay)

INGREDIENTS

- 1 cup** Sugar
- 1 pkg** Unflavored Gelatin
- 1 pint** Heavy Cream
- 1 pint** Sour Cream
- 1 tsp** Vanilla
- 1 pkg** Frozen Berries, thawed

Mix sugar and unflavored gelatin. Blend in heavy cream and stir gently over low heat until gelatin is dissolved.

Remove from heat and fold in sour cream and vanilla. Cool in refrigerator for a few hours in individual long stem glasses.

Top each before serving with raspberries strawberries or blueberries.



Carole Cragg's Almond Cake

INGREDIENTS

- 1 cup** Butter, softened
- 1 cup** Sugar
- 2 tsp** Almond Extract
- 1** Egg Yolk
- 2 cups** Flour
- 1 tsp** Baking Powder
- 1 pinch** Salt

Mix together, butter, sugar, flavoring and egg yolk. Add dry ingredients and mix well. Press into an oiled 9" round baking or spring-form pan, brush with egg white, bake at 350 degrees for about 25 -30 minutes.

Top with fruit pie filling of choice, sliced berries/fruit or melt chocolate over it.

To make little tarts, use an oiled mini-muffin pan. Fill rounds with mix, make a thumb print and put in jam. Bake about 10 minutes.

Remove cakes after baking before they get too cold or they will stick.

THESE RECIPES WERE OFTEN SERVED AT THE LAVISH DESSERT BUFFETS FOR EVENTS IN THE EARLY DAYS OF THE FRIENDS.



Rhonda Gilbraith
Secretary



Open Position
President



Ann Gannon
Treasurer



Carole Cragg



Friends
BETHEL UNIVERSITY LIBRARY
2019-2020 BOARD



Rosalie Huston



Lindsey Long



Verena Getahun



Scott Sochay



Andrea Kanani



David Stewart
Director/Ex Officio

Thank You To Our Former Board Members!

Donna Barnett
Kaylin Creason
Betsy Dadabo
Taylor Delzer
Lorraine Eitel
Lyndi Finifrock Fabbrini
*Eric Gossett
Elizabeth Healy

Jerry Healy
Jocelyn Jensen
*Andy Johnson
Bill Johnson
James E. Johnson
Tom Johnson
*Calvin Konop
Verena Larson

John Lawyer
Emily Leyh
Holly Pierson
*Diana Magnuson
Jim Sheldon
Earleen Warner
Paulette Wendt Wahl

* Served as President



Friends

BETHEL UNIVERSITY LIBRARY

3900 Bethel Drive
Saint Paul, MN 55112-6999

Address Service Requested



Be a Part of Our Continuing Story...

JOIN, RENEW OR INCREASE
YOUR MEMBERSHIP TODAY!

<https://www.bethel.edu/library/friends-university-library/membership-info>



BETHEL
UNIVERSITY

Library

3900 Bethel Drive - Saint Paul, MN 55112-6999
Email bul-friends@bethel.edu
Website www.bethel.edu/library

The Friends of the Bethel University Library enhance the quality of the library collections, facilities, and services by encouraging gifts, awareness of library resources, and participation in library programs.

Board Members

Open Position - President
Rhonda Gilbraith - Secretary
Ann Gannon - Treasurer

Carole Cragg	Lindsey Long
Verena Getahun	Scott Sochay
Rosalie Huston	David Stewart
Andrea Kanani	

Newsletter edited by Lauren Gannon