

Bethel University

Spark

Among Friends Library Newsletter

Library and Archives

Fall 11-2021

Among Friends Fall 2021 Vol 22 No 1

Friends of the Bethel University Library

Follow this and additional works at: <https://spark.bethel.edu/library-newsletter>

Recommended Citation

Friends of the Bethel University Library, "Among Friends Fall 2021 Vol 22 No 1" (2021). *Among Friends Library Newsletter*. 1.

<https://spark.bethel.edu/library-newsletter/1>

This Book is brought to you for free and open access by the Library and Archives at Spark. It has been accepted for inclusion in Among Friends Library Newsletter by an authorized administrator of Spark.

AMONG FRIENDS

03 2020-2021 FRIENDS AWARDS

The Connie Larson Scholarship and Library Research Prize winners are announced.

07 FOOTNOTES

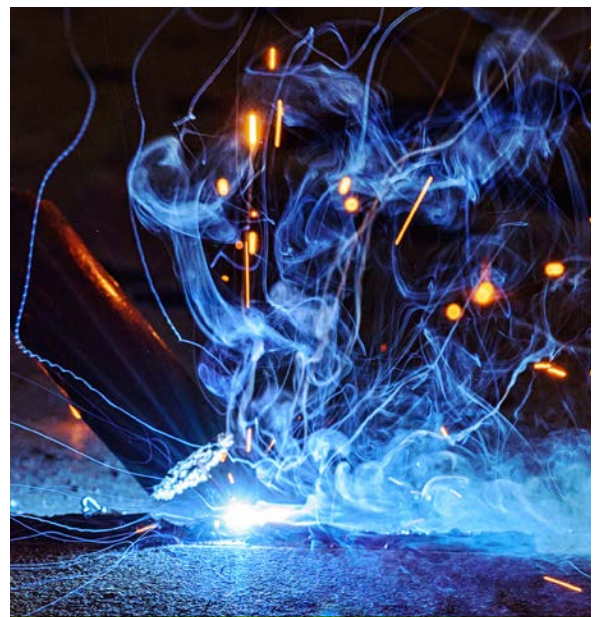
Celebrating staff accomplishments and milestones.

04 MEET OUR NEW ARCHIVIST

Meet the newest member of the Bethel Library Team.



04 CELEBRATING BETHEL AT 150 YEARS



02 EXPLORE SPARK



06 BOOKS ARE INDEED A MARVELOUS THING IN ANY FORM



05 SPECIAL PRIMETIME EVENT



EXPLORE SPARK: <https://spark.bethel.edu/>



In our spring 2021 newsletter, director David Stewart mentioned that the BUL had subscribed to a new hosting service called Digital Commons. (Stewart, David, "Worst Year. Ever?," Among Friends 21, no. 2, (2021): 2.) This new scholarly platform went live on the Web this fall with our name, SPARK.

SPARK collects and showcases the Scholarship, Publishing, Arts, Research, and Knowledge of faculty, students, and staff from departments, programs, and centers across Bethel University. Many academic departments have a physical bulletin board or display case containing faculty and student academic achievements that they want to share with the community. SPARK provides a way to share these more widely with a digital display that increases discoverability on

the Web and in academically-oriented places like Google Scholar.

What sets SPARK apart from the existing Digital Library collections is that the software is specifically designed for scholarly work and publishing, and has built-in categories for academic disciplines and peer-review. It also creates spaces for academic departments and programs, peer-reviewed journals, and academic conferences. This design optimizes items archived in SPARK for indexing in search engines like Google and Google Scholar. Because of these advantages in ranking and access, we have now moved all of Bethel's Electronic Theses and Dissertations from our previous system into SPARK.

Yet another exciting SPARK feature is that those who make their work available by depositing it are provided with metrics for their indi-

vidual and organizational impact. These reports track how people are interacting with a work, including pageviews, downloads, and where they are located geographically and organizationally. For example, during the month of September, SPARK's first full month since going live, 608 items were downloaded from 41 different countries overall. The top paper in September, a Nurse Educator Master's thesis by Elizabeth Voss, "Nursing Strategies to Meet the Communication Needs of Children with Autism Spectrum Disorder," was downloaded 29 times across 13 different countries. We're excited to see how this new service extends Bethel's scholarly reach and reputation in such a short time!

Kent Gerber
Digital Library Manager



[www.bethel.edu/
events/calendar/](http://www.bethel.edu/events/calendar/)

Dr. Andy Bramsen, Political Science

THE IMPACT OF POLITICAL POLARIZATION ON CHURCH LIFE AND SPIRITUAL FORMATION



Zoom

Tuesday, November 16 at 11:15 am
BU LIBRARY FIRESIDE LOUNGE



2021 FRIENDS AWARDS

CONNIE LARSON MEMORIAL SCHOLARSHIP



The 2021 Connie Larson Memorial Scholarship winner is Jhenna Becker. Jhenna is a senior Material Services Assistant who has worked with the library since her freshman year.

Her supervisors, Amy Reinhold and Brooke Ballantine praised her in their recommendation: “Jhenna has consistently demonstrated an attitude of service in the Material Services Department over the past three years.

Even when on-campus work was not available because of COVID restrictions, Jhenna was eager to fulfill her hours doing virtual tasks. When we returned to campus, summer 2020 was a time of many major projects in our department that included print journal weeding, moving and processing Lakeside Center (Seminary Library) books, and keeping up with changes due to COVID.

Because Material

Services staff had varying on-campus schedules, Jhenna played an important role in ensuring that journals were discarded; books were retrieved, moved and processed; and acquisitions processes continued in a timely manner. Jhenna can be relied on to complete tasks assigned to her without complaint and is always willing to answer questions other student workers may have.”
Congratulations, Jhenna!

LIBRARY RESEARCH PRIZE FOR FIRST YEAR STUDENTS 2020-2021

Congratulations to the 2020-2021 winners of the Library Research Prize for First Year Students!

The three winners were nominated by their professors to submit their papers for consideration in the spring of 2021. Reading and evaluation happened during the summer with the 3 winners announced this fall.

The Friends have sponsored the Library Research Prize since 2010, but specifically for first year students since 2019-2020.



FIRST PLACE

Soraya Keiser

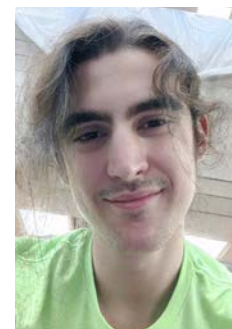
Fur Trade in Minnesota:
The Rise and Fall
of Ojibwe Power



SECOND PLACE

Sam Carlson

His Soul Is Marching
On: The Abolitionist
Spirit of John Brown



THIRD PLACE

Sam Derfus

John Brown:
The Hanged Hero

To watch
past videos:



[www.youtube.com/
user/BethelUDigLib/
videos](https://www.youtube.com/user/BethelUDigLib/videos)



Edgren Scholars:

Dr. Ripley Smith, Communication Studies & Kate
Larson, Senior Rhetoric & Public Influence Major

**NO PLACE LIKE HOME:
UNDERSTANDING SOCIAL CONNECTION
AMONGST THOSE EXPERIENCING
HOMELESSNESS**



Zoom

Tuesday, November 18 at 11:15 am

BU LIBRARY FIRESIDE LOUNGE



CELEBRATING BETHEL AT 150 YEARS

Bethel University is celebrating a milestone 150 years as an institution of Christian education during the 2021-2022 academic year.

As part of this year's Homecoming celebration, the library exhibited a digital presentation of the history of Bethel's Arden Hills campus.

Digital Library Manager, Kent Gerber, along with Acquisitions and Metadata Librarian, Kimberly Werner and student worker, Meraiah Latty, researched and produced the presentation using images and information from the Bethel Digital Library. The Friends of the Library are con-

tinuing the conversation of the history of Bethel's campus by sponsoring a special Primetime at BU Library program featuring, Wayne Roosa, Emeritus Professor of Art History. Wayne recently spent a semester researching and documenting the aesthetic philosophy developed by Eugene Johnson, founder of the Bethel art department used to design Bethel's campus.

Join us in person or via Zoom to learn more about how this philosophy was developed, applied (or misapplied!) on Tuesday, November 9 at 11:15 a.m. in the BU Library Fireside Lounge.



WELCOME TO OUR NEW ARCHIVIST

The Bethel Library will be welcoming a new team member in early December. Rebekah Bain will be joining our team as Archivist of the Bethel/Converge Archives and History Center and Liaison Librarian.

Rebekah will be moving to the Twin Cities from her home in Glendale, Wisconsin. She did her undergraduate studies at UW-LaCrosse and received her Master of Arts in History and Master of Library Information Science with an Archival Studies Concentration at UW-Milwaukee.

When asked when she knew she wanted to be a librarian and archivist, she responded, "I learned to love history growing

up listening to my grandfather's stories of service during World War II. When I was a history student at the University of Wisconsin-LaCrosse, I was a student worker in the archives, where I decided to pursue a career in the field."

Rebekah enjoys playing flute in her spare time. She has played for about 15 years in a variety of bands and orchestras, and hopes to participate in one here in Minnesota. She also enjoys reading, especially about history!

She is excited to work with the historic records held at the History Center, making sure they are preserved for the future.

We're looking forward to having Rebekah as part of our team!



Seminary Groundbreaking, 1964; Courtesy of the Bethel Digital Library Historic Photos Collection

SCAN THE QR CODE TO
WATCH THE CAMPUS
HISTORY PRESENTATION:

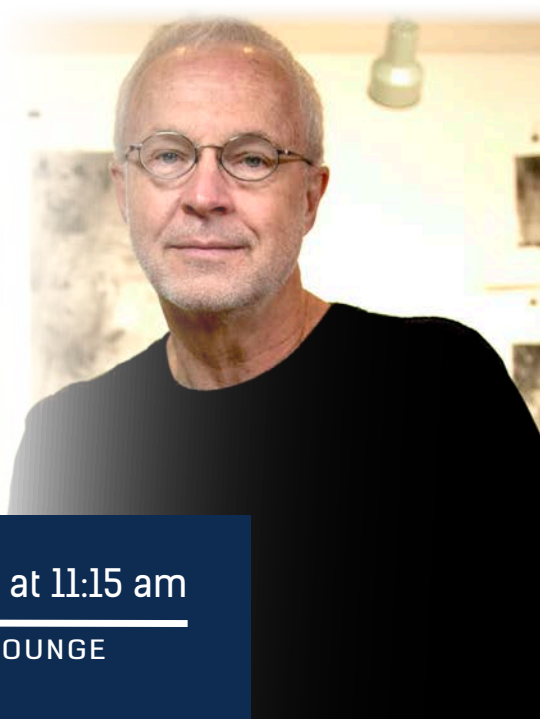


[HTTP://BETHELDIGITAL
SCHOLARSHIP.ORG/
ARDEN-HILLS-THEN-NOW
/PRESENTATION.HTML](http://betheldigital.scholarship.org/arden-hills-then-now/presentation.html)

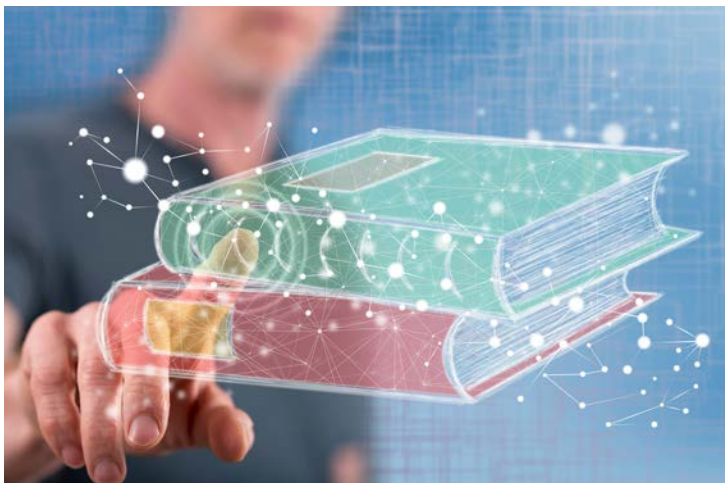
Wayne Roosa, Emertius Professor of Art History

BY DESIGN (BUT SHORT ON MONEY)

THE AESTHETIC PHILOSOPHY GUIDING
BETHEL'S CAMPUS PLANNING



Tuesday, November 9 at 11:15 am
BU LIBRARY FIRESIDE LOUNGE



BOOKS ARE INDEED A MARVELOUS THING IN ANY FORM

Bethel Library's commitment to expanding its technological holdings goes beyond providing easy access to digital resources.



Dr. Angela Sabates

Angela is the President of the Friends and Associate Professor of Psychology. Her research interests are broadly related to social perception with regard to both individuals and inter-group relations.

When one hears the word, "library," it is nearly impossible not to think of a physical place filled with physical books. In fact, we are most inclined to think that the greater the number of books, the more prestigious, "legitimate," and impressive the library is.

This near-exclusive emphasis on physical books is, of course, changing, as libraries move toward increasing digital collections. The Bethel University Library is no exception. Our progress on the acquisition of digital sources has enabled many faculty and students to do research without the use of hard copy resources such as books.

But Bethel Library's commitment to expanding its technological holdings goes beyond providing easy access to digital resources for research purposes. In keeping with the University's mission for equity and love for all, Bethel's Library is also committed to the success of its patrons, including students for whom economic hardship makes the buying of class textbooks either very difficult or impossible altogether.

The Zero Cost Course Resources Initiative (formed in 2018) is funded by a grant from the Bethel University Foundation. With this grant, the Bethel University Library

has collaborated with CAPS/GS with the goal of eliminating textbook costs. This is accomplished by substituting currently purchased textbooks with high-quality Open Educational Resources (OER) and/or Library eResources. The Library has now purchased over 400 eBooks that are being used in various courses. I am beginning to collaborate with Cory Whipkey, who is seeking to extend this initiative to the College of Arts and Sciences.

Once again, the Bethel University Library helps lead the way toward a brighter, more well-educated future for all. What a privilege to serve with this group!

MORE ABOUT OPEN EDUCATIONAL RESOURCES

Open Educational Resources (OER) are resources (books, videos, audio) for classroom instruction that are free to use and allow instructors to customize them to their course.

The use of OER eliminates or reduces the cost for students to access the resources they need for classes and reduces barriers for students to attend Bethel.

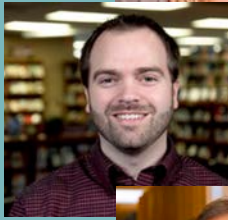
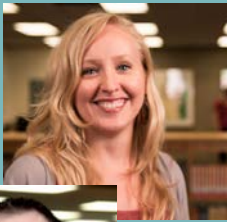
Building on the success of the Zero Cost Resources Initiative started by Earleen Warner in the adult programs, the goal is to help bring awareness of OER to our undergraduate faculty and help encourage the use and adoption of them for their classroom instruc-

tion. As a Research and Instruction librarian at Bethel, Cory has the opportunity to work with undergraduate academic departments and our other liaison librarians to accomplish this work. We are already seeing success in our efforts in the Psychology Department and are excited about expanding our work to the rest of the College of Arts and Sciences.



THIS PAST YEAR, CORY WHIPKEY, RESEARCH AND INSTRUCTION LIBRARIAN, COMPLETED A CERTIFICATE IN THE OER LIBRARIANSHIP PROGRAM THROUGH THE OPEN EDUCATION NETWORK AT THE UNIVERSITY OF MINNESOTA.

LIBRARIANS IN THE CLASSROOM



The Research and Instruction team is taking on a new challenge—and fulfilling a long-discussed desire to be more involved in student learning—by teaching sections of Inquiry Seminar.

Inquiry Seminar is a General Education course where students explore a specific topic of interest with the goal of

developing and understanding the meaning and value of a liberal arts education in the Christian tradition while also establishing community and learning and practicing research, writing, and speaking skills.

This past summer, Lyndi Fabbri, Scott Kaihoi, and Cory Whipkey developed a course on Big Data in which

students learn about the impact of algorithms and data in society while developing their skills in research, writing, and speaking.

Librarians as classroom instructors elevates the profile of the library and students get to work with research experts—a win-win for everyone!



FOOTNOTES

01. WORK-VERSARIES

15 years:

Ann Gannon
Administrative
Coordinator

25 years:

Rhonda Gilbraith
Associate Director
& Collection
Development
Librarian

02. A BUL STAR!

It was a monumental summer for Amy Reinhold, Cataloging Librarian. She was instrumental in leading the BUL to a successful migration to the MnPALS system and led library staff to shift approximately, 42.625 books in a record 32 hours (90 staff hours) this summer. That's equivalent to about 1/3 of our entire collection! Amy was awarded a Bethel Star Award for her hard work!

03. ANOTHER BUL STAR!

Lauren De Cleene, Public Services Manager, was awarded a Bethel Star Award for her tireless work keeping the library doors open and the front desk staffed during COVID. This often included managing shift issues after hours, coming in early to open and covering shifts for students at the last minute. Thanks, Lauren, for going above and beyond to serve our community!

04. 700 & GROWING

Kent Gerber, Digital Library Manager, and his team just finished processing and publishing the 700th thesis and dissertation for the Digital Library collection.

They started with a few programs in 2015 (D.Min, Ed.D. and Physician Assistant) and now have 10 grad programs contributing.



BETHEL UNIVERSITY LIBRARY
3900 Bethel Drive
Saint Paul, MN 55112-6999

Address Service Requested



BE A PART OF OUR CONTINUING STORY...



JOIN, RENEW OR INCREASE
YOUR MEMBERSHIP TODAY!

[www.bethel.edu/library/
friends-university-library/](http://www.bethel.edu/library/friends-university-library/)



BETHEL | Library
UNIVERSITY

CONTACT AND INFO

3900 Bethel Drive - Saint Paul, MN 55112-6999
Email bul-friends@bethel.edu
Website www.bethel.edu/library

The Friends of the Bethel University Library enhance the quality of the library collections, facilities, and services by encouraging gifts, awareness of library resources, and participation in library programs.

BOARD MEMBERS

President: Angela Sabates
Vice President: Open
Treasurer: Ann Gannon
Acting Secretary: Rhonda Gilbraith (Open)

Carole Cragg	Verena Getahun
Rosalie Huston	Andrea Kanani
Lindsey Long	Scott Sochay
David Stewart (ex officio)	

Newsletter: Ann Gannon